



VT-65 HIGH OUTPUT

Your best choice for lift & carry. The VT-65 brings maximum reliability and productivity to the table. The VT-65 cab offers comfortable space, improved ergonomics and HVAC. Optional all-weather pressurized cab offers a cleaner environment for the operator.

This model was built with ASV's industry leading serviceability features. These features include a swing out radiator, top hood and side doors for easy access to all parts of the engine.

POWER

TURBOCHARGED 67 HP AFTERCOOLED DEUTZ 2.2 LITER DIESEL 3 CYLINDER ENGINE.



7480#

OPERATING WEIGHT

1925#

RATED OPERATING CAPACITY @ 35%

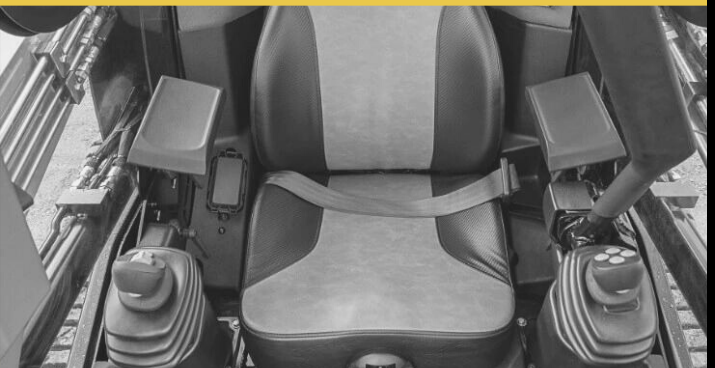


4.2 PSI

GROUND PRESSURE

67 HP

ENGINE POWER



PERFORMANCE

EXCELLENT MANEUVERABILITY AND A 116.5" LIFT HEIGHT WITH PATENTED POSI-TRACK SYSTEM MEANS THIS LOADER WILL TAKE YOU WHERE YOU NEED TO GO AND WON'T BE HELD BACK BY SEASONAL CONDITIONS.



Available at Highway Equipment & Supply Co.

Harrisburg - Brownstown - Lock Haven

www.hwyequip.com/asv